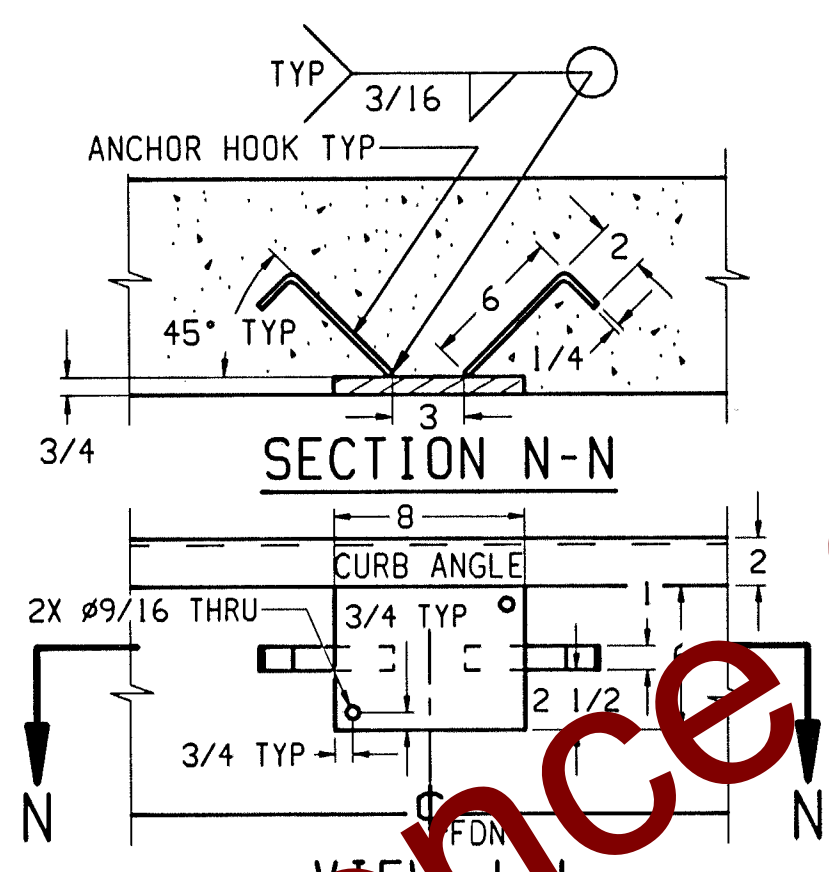
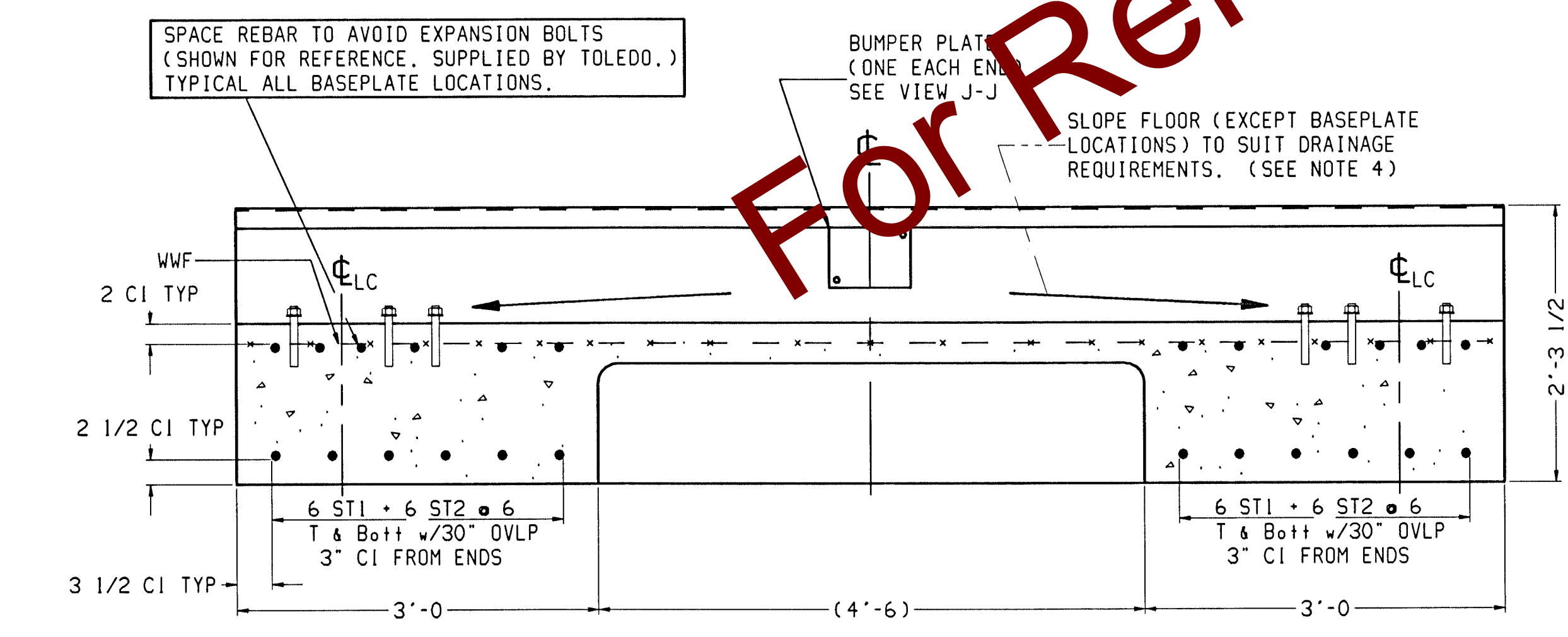


**DETAIL "L"**  
SCALE: 1:8  
EXPANSION BOLT LOCATIONS  
(OTHER SIDE IS OPPOSITE)

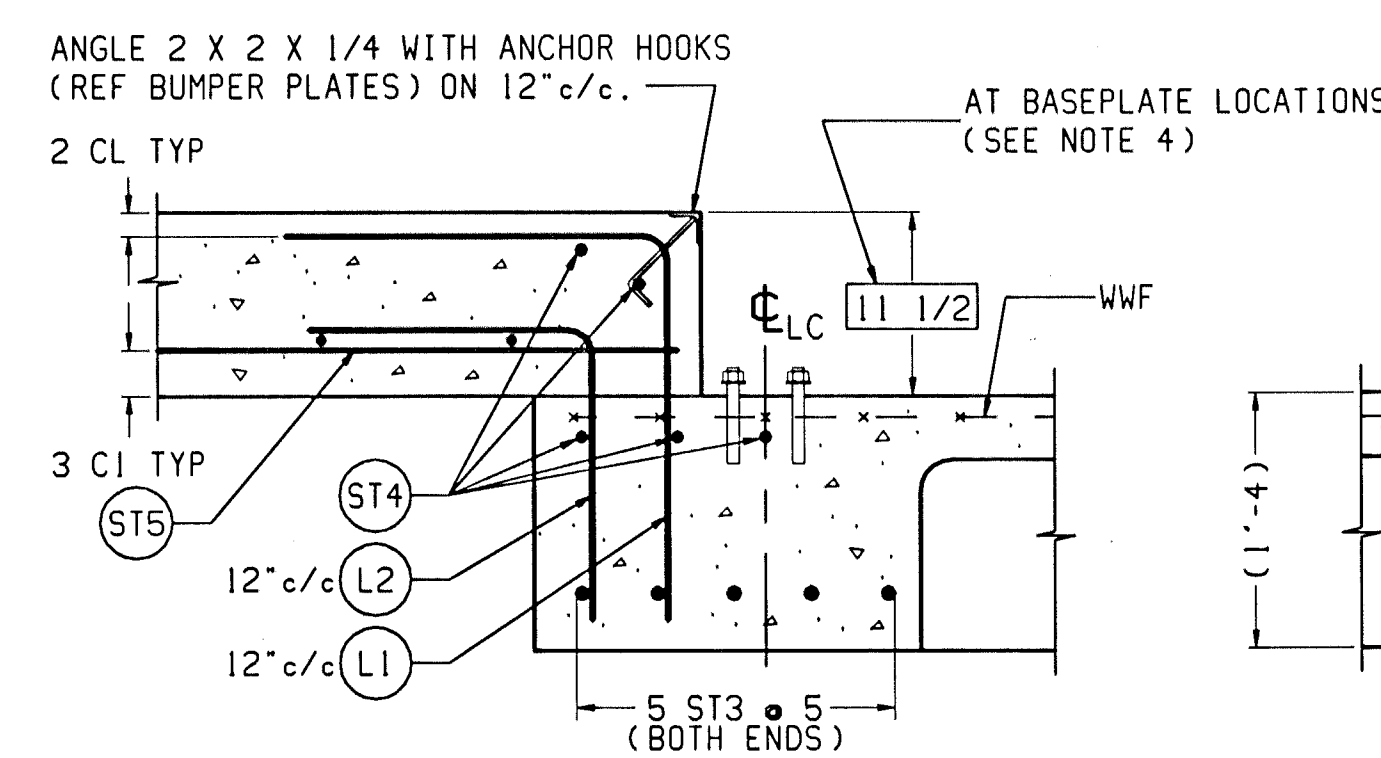
**DETAIL "K"**  
SCALE: 1:8  
EXPANSION BOLT LOCATIONS  
(OTHER SIDE IS OPPOSITE)



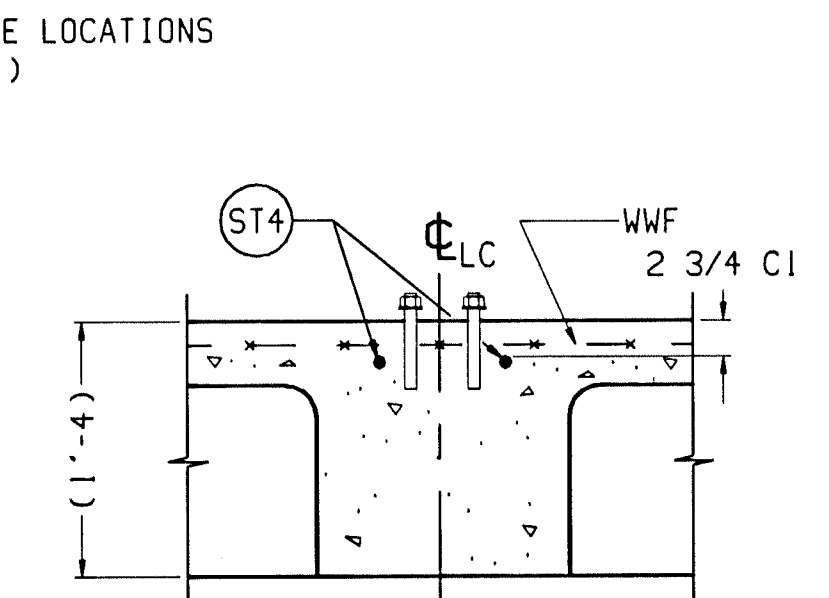
**SECTION N-N**  
SCALE: 1:8  
BUMP PLATE ASSEMBLY: ONE EACH END.  
MATERIAL: H.R. STEEL. (BY OTHERS).



**SECTION B-B**  
SCALE 1:12



**SECTION C-C**  
SCALE 1:12  
(TYPICAL END WALL)



**SECTION D-D**  
SCALE 1:12  
(TYPICAL FOOTER)

REINFORCING STEEL SCHEDULE (A.S.T.M. A-615 GRADE 60)						
SYM	QTY	SIZE	LOCATION, DIRECTION	A		
				B	B	WGT
ST1	24	#6	FLOOR BEAMS, LONG.	40'-0"		1442
ST2	24	#6	FLOOR BEAMS, LONG.	34'-0"		1226
ST3	10	#6	END FOOTERS, LATERAL	10'-0"		151
ST4	10		ENDS, LATERAL			105
	20	#5	APPROACHES, LATERAL	10'-0"		209
	6		FOOTERS, LATERAL			62
ST5	20	#5	APPROACHES, LONG.	9'-6"		199
L1	20	#5	APPROACH TO END TIES	2'-0"	2'-0"	84
L2	20	#5	APPROACH TO END TIES	1'-6"	1'-6"	63

MATERIAL SUMMARY*	
CONCRETE (CU. YDS.)	34
REINFORCING STEEL (LBS)	3541
WWF: 6x6-W1.4xW1.4 (SQ. FT.)	750

\* QUANTITIES GIVEN ARE FOR FOUNDATION ONLY. IF CONCRETE PLATFORMS ARE USED, REFER TO GENERAL LAYOUT DRAWING FOR DECK CONCRETE AND REINFORCING STEEL QUANTITIES & SPECS.

- NOTES:**
- 1) USE MINIMUM 3000 PSI STRENGTH CONCRETE AT 28 DAYS WITH 5-7% AIR ENTRAINMENT.
  - 2) USE MINIMUM 60KSI YIELD DEFORMED REINFORCING STEEL.
  - 3) FOUNDATION REQUIRES 1500 PSF RATED SOIL.
  - 4) TOP OF CONCRETE AT BASEPLATE LOCATIONS TO BE LEVEL AND IN ONE PLANE  $\pm 1/8"$ .
  - 5) DIAGONAL MEASUREMENTS ENDWALL TO ENDWALL MUST BE EQUAL WITHIN  $1/2"$ .
  - 6) BASEPLATE ANCHORS TO BE  $3/4"$  DIA. EXPANSION BOLTS X 6" LG. SUPPLIED BY TOLEDO. USE BASEPLATES AS TEMPLATES TO LOCATE EXPANSION BOLTS DURING SCALE INSTALLATION.
  - 7) RAMP LENGTH: -PER LOCAL REGULATIONS  
-1/2" SLOPE PER FOOT TYPICAL
  - 8) CONTRACTOR SUPPLIES:
    - EXCAVATION
    - REINFORCING STEEL
    - CURB ANGLE ASSEMBLIES (SEE NOTE 4)
    - CONCRETE AND FORMS
    - 1 1/2" DIA CONDUIT
    - BUMPER PLATE ASSEMBLIES (VIEWS J-J & N-N)

MARK	REVISION	BY	DATE	TOLEDO		METTLER-TOLEDO, INC.	
				SCALE: NOTED		TOLERANCE UNLESS OTHERWISE NOTED	
				DATE: 8-28-92		FRACT 1/32 DECIMAL .XX .020	
				TITLE: 7560C/D FOUNDATION; BEAM SLAB 70'x10'		DRAWN BY: ALS	
						APPROVED BY: TDA	
						DRAWING NUMBER:	
						TC202148	